

Moses skickade Josua på erövringståg mot Jeriko (Josua 7-8), ner till Negevöknen (Josua 10), och sedan upp till Saida i nuvarande Libanon.

“All de som voro därinne blevo slagna med svärdsegg och givna till spillo, så att intet som anda hade lämnats kvar...” Josua 11:11



Josua besestrar amalakiterna

”Så drag nu åstad och slå amalekiterna och giv dem till spillo med allt vad de hava, och skona dem icke, utan döda både män och kvinnor, både barn och spenabarn, både fäkreatur och får, både kameler och åsnor.” Samuelsboken 1:15:3



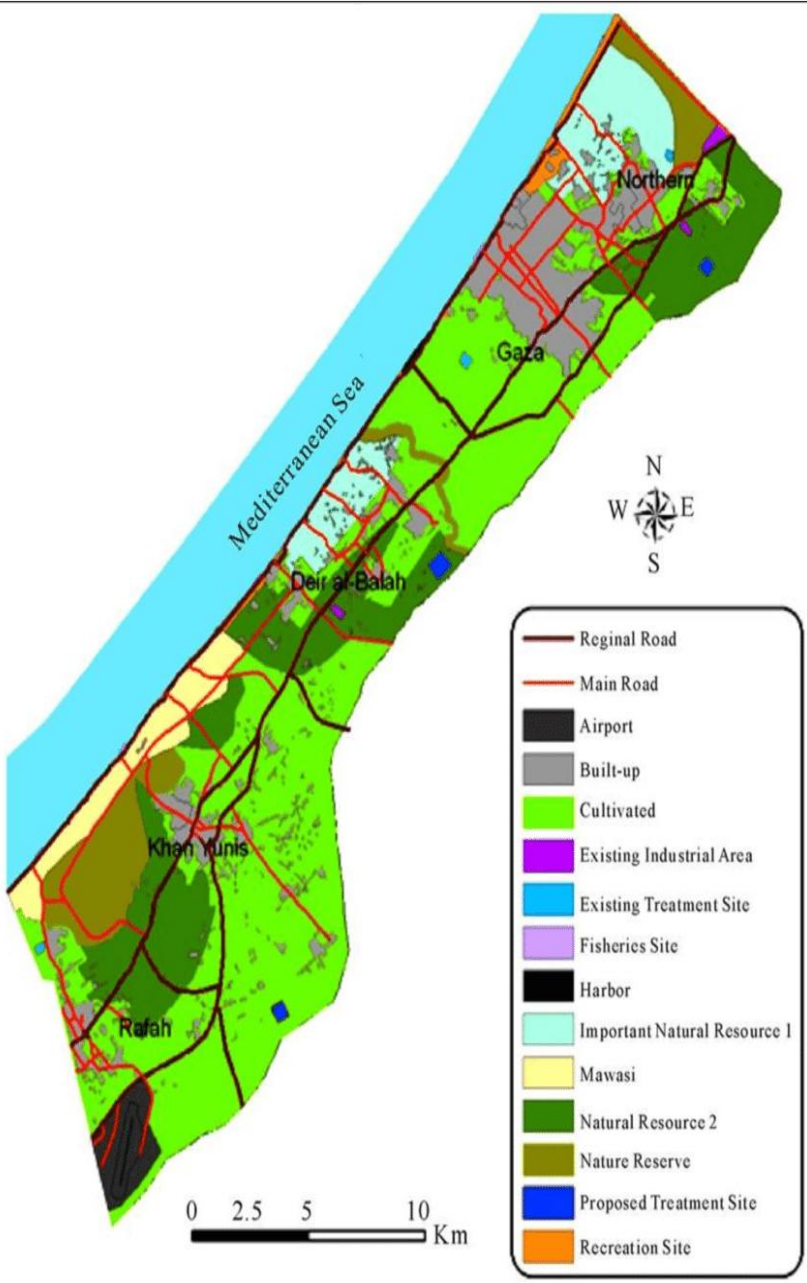
Nakba 1948 15.000 döda 750.000 flyktingar



FN 22 september 2023

JEWISH COLONIZATION BEFORE 1948





Gotland 3 134 km² 60.000 invånare

Gaza 360 km² 2,2 miljoner invånare



15
BIN
TON

20
BIN
TON

85
BIN
TON

HIROŞİMA
1945

LONDRA
1940

GAZZE
2024

The image consists of three vertical panels overlaid on a background of a destroyed city. Each panel features a bomb with specific tonnage and a flag. The first panel shows a 15-ton bomb with the US flag, labeled 'HIROŞİMA 1945'. The second panel shows a 20-ton bomb with the Nazi flag, labeled 'LONDRA 1940'. The third panel shows an 85-ton bomb with the Israeli flag, labeled 'GAZZE 2024'. The background shows a wide, desolate landscape of rubble and debris, with a dirt path leading through it and many small figures of people walking in the distance.





**WORLD'S THIRD-OLDEST CHURCH DAMAGED IN DEADLY
GAZA ROCKET STRIKE**





Förstöra lantbruket



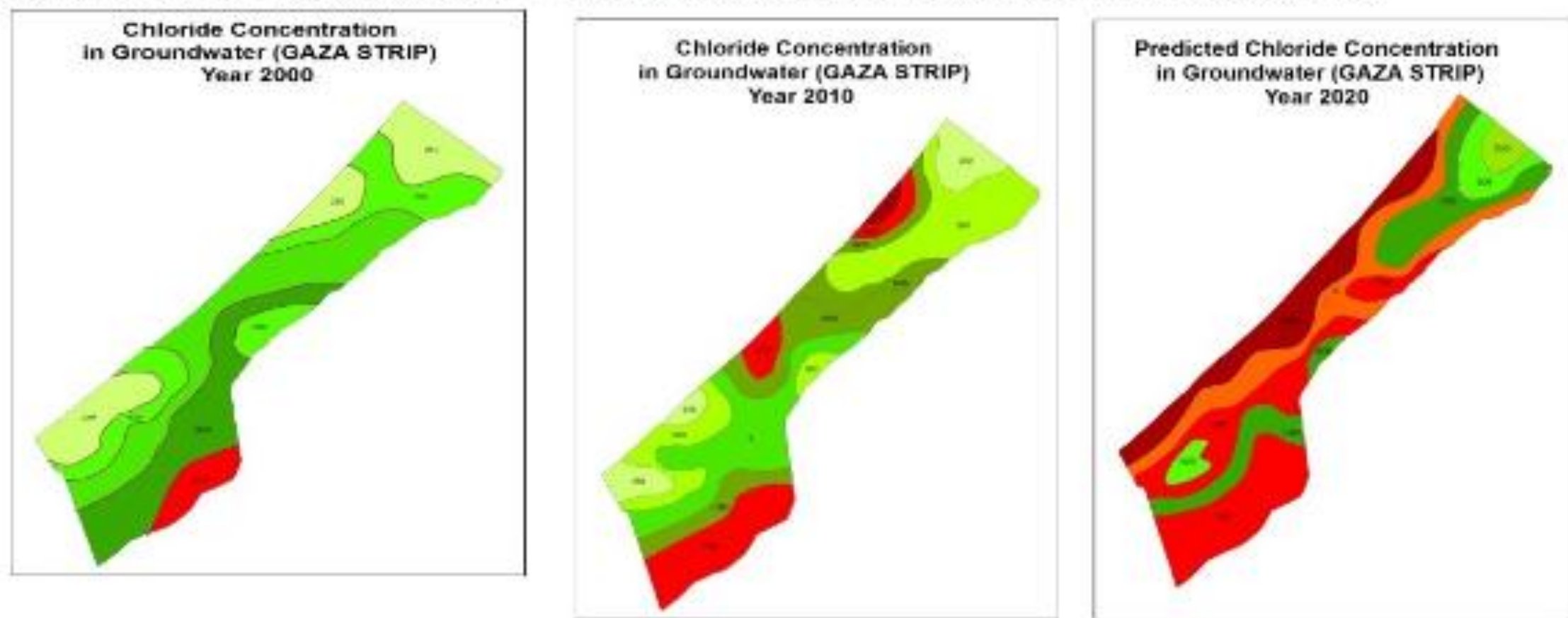
Förstöra flygplatsen



Förstöra hamnen

UNFIT FOR HUMAN CONSUMPTION

Figure 1. Levels of chloride (denoting salinity) in the groundwater within the borders of Gaza, for the years 2000 and 2010, plus predicted data for 2020. (Data from the Palestinian Water Authority, Gaza). The internationally accepted guideline for chlorides in drinking water is 250 mg/litre.

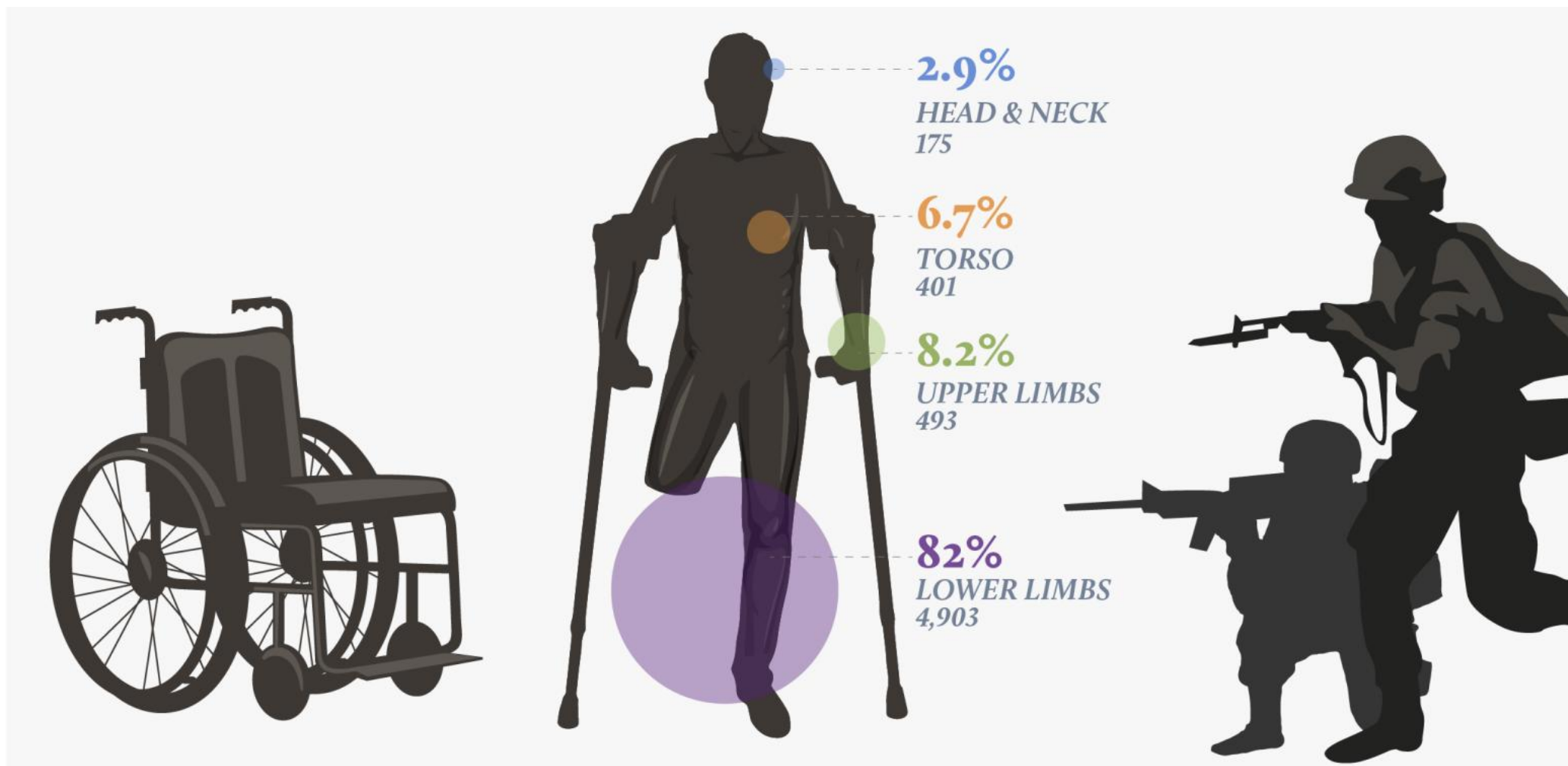


Over 99% of Gaza's water is unfit for human consumption. One parameter of water quality is its level of chloride (salinity). chloride in Gaza's water in the years 2000 and 2010, plus predicted levels for 2020. Darker shades of green and red indica



Israels mur mot Gaza kostade 1,1 miljarder dollar och var färdig 2021. Elbit Systems bidrog med viktiga delar.





The March of Return 2018-2019 223 palestinier sköts ihjäl

Svenskt stöd till sjukvård i Palestina



PALESTINAGRUPPERNA
I SVERIGE



Sida



Barnneurolog David Henley

DISABILITY IN THE WEST BANK AND GAZA STRIP



Abu Raya Rehabilitation Center 1990

Community Based Rehabilitation 1992



Haidar Abdel Shafi

Mustafa Barghouti

PMRS - Palestinian Medical Relief Society



www.pmars.ps

Västbanken och Gaza

Bildades 1979

Samarbetat sedan 1986

PGS - utbildningsinsatser

Vårdcentraler

Mobilkliniker

Village Health workers

Volontärer



PMRS – Gaza february 2024



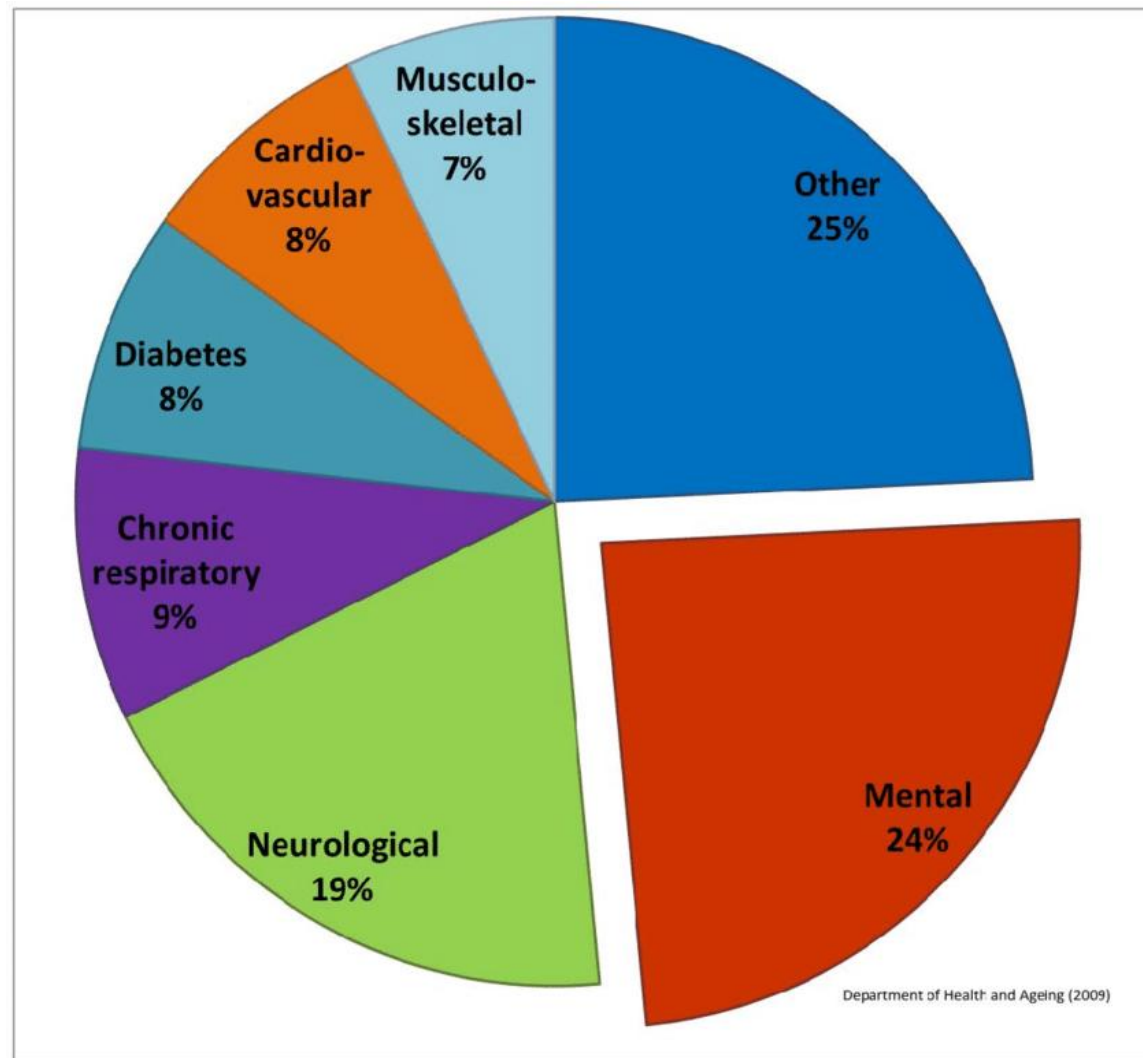
Youth Vision Society - Gaza



Vila i frid Doaa



- Den 8 december 2023 fick vi ett sorgligt besked att Doaa El Massri dödats i ett israeliskt angrepp på Gaza.
- Doaa var projektsamordnare för *Let me tell you my story* som PGS och Youth Vision Society drivit med stöd av Svenska Institutet. Tillsammans med aktivister arbetade Doaa mot genusbaserat våld och har bland annat producerat kortfilmer som visats över hela Palestina, med åtföljande diskussioner.
- Doaa var en ledare och förebild för många i kampen för fred, mänskliga rättigheter, jämställdhet och demokrati. Vi minns Doaa med stor värme och beundran.



BURDEN OF MENTAL ILLNESSES RELATIVE TO OTHER DISORDERS, IN TERMS OF YEARS LOST AS A RESULT OF DISABILITY



Psykiater Eyad El-Sarraj

GCMHP



Gaza Community Mental Health Programme

برنامج غزة للصحة النفسية



Mänskliga rättigheter genom
Mentalhälsovård

Samarbete sedan 1990 då
GCMHP bildades

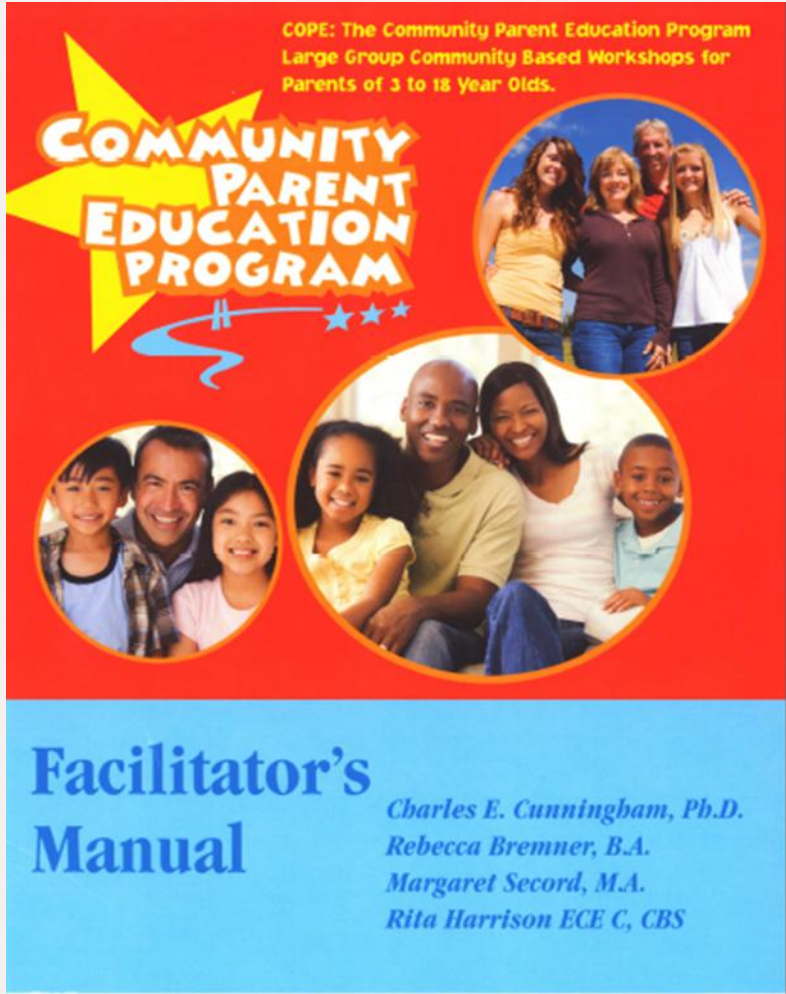
PGS utbildningsinsatser

Tre kliniker samt flera
satellitkliniker

Terapi

Utbildning och forskning





COPE



Agneta Hellström







Student Mediation





State of Autism in the Gaza Strip 2015

Resources, Attitudes and Opportunities

Funded By: Islamic Relief – Worldwide

Implemented By: Gaza Community Mental Health Programme

Supervised: Palestine & Right To Live Society

- Education for selected professionals so that parents and network can carry out evidence-based interventions for autistic children.
- 3 years training starting in February 2015.











مستشفى الوفاء للتأهيل الطبي
ELWAFA MEDICAL REHA B. HOSPITAL



برنامج التأهيل الطبي
Elwafa Medical Rehab Hospital



مستشفى
للتأهيل الطبي

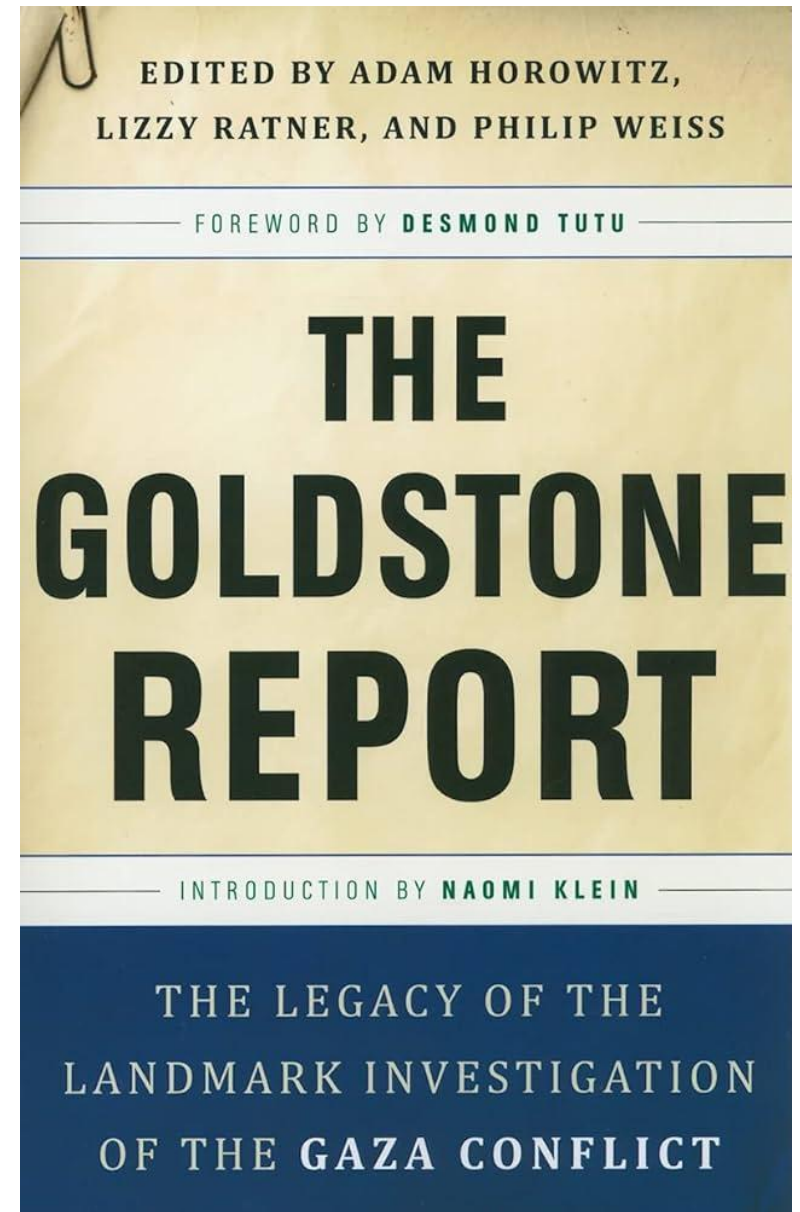
El Wafaa Hospital
Destroyed by Israel
+972-59-887-7011



Former President Carter, right, pauses while meeting the media at the ruins of the American International School, which was destroyed during Israel's offensive in Gaza, in Beit Lahiya, northern Gaza Strip, on June 16, 2009. Carter said he was trying to persuade Hamas leaders to accept the international community's conditions for ending its boycott of the Islamic militant group. Associated Press/Khalil Hamra



Israel bombade FN:s högkvarter i Gaza med vit fosfor



Goldstones rapport om 2008-09. Sedan nya anfall 2012, 2014, 2018-19, 2021.

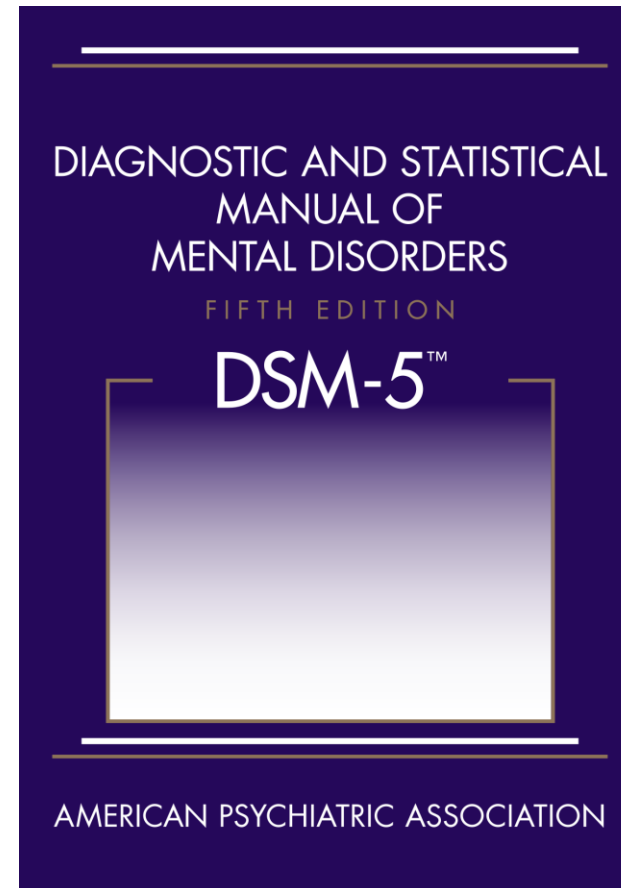


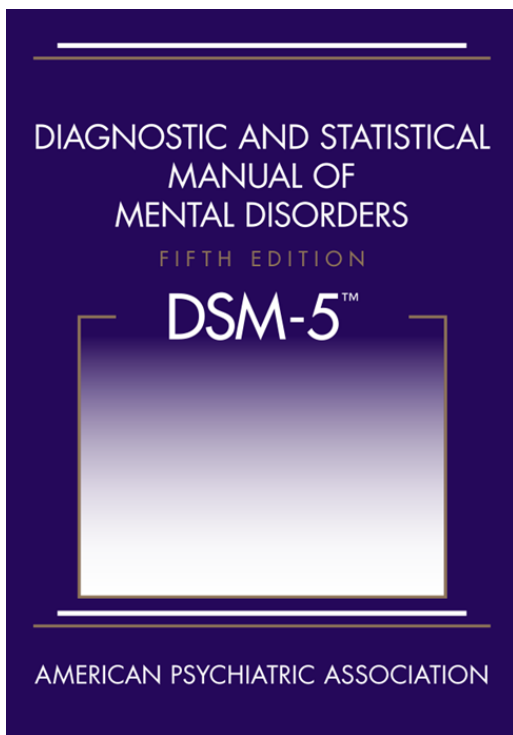
Vilka psykiska skador ger kriget?

**Somatisk diagnos:
anamnes och status**

**Vid behov kemlab,
fyslab och röntgen**

**Psykiatrisk diagnos:
Endast frågor och
svar om symtom**

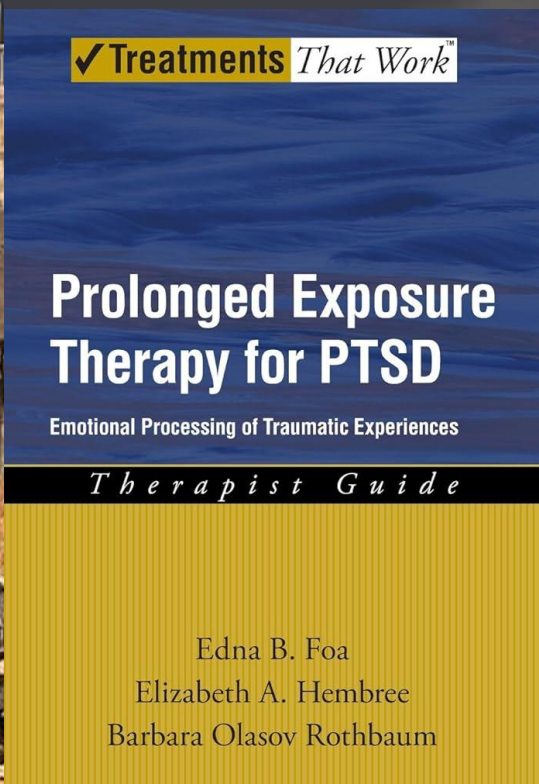




Att var deprimerad, ångestfylld och extremt stressad är ingen sjukdom men DSM-systemet kan inte skilja ut det



**94% i centrala och södra Gaza lyckades bli poliovaccinerade.
120.000 i norra Gaza har inte kunnat få en andra dos enligt WHO.**



Love Israel Foundation stödjer Edna Foas arbete med att behandla PTSD hos israeliska soldater

- Solomon Z, Kotler M, Mikulincer M. Combat-related posttraumatic stress disorder among second-generation Holocaust survivors: preliminary findings. Am J Psychiatry. 1988 Jul;145(7):865-8.
<https://pubmed.ncbi.nlm.nih.gov/3381934/>
- 2 and 3 years after their participation in the 1982 Lebanon War, the children of Holocaust survivors, i.e., "second-generation" casualties, had higher rates of PTSD

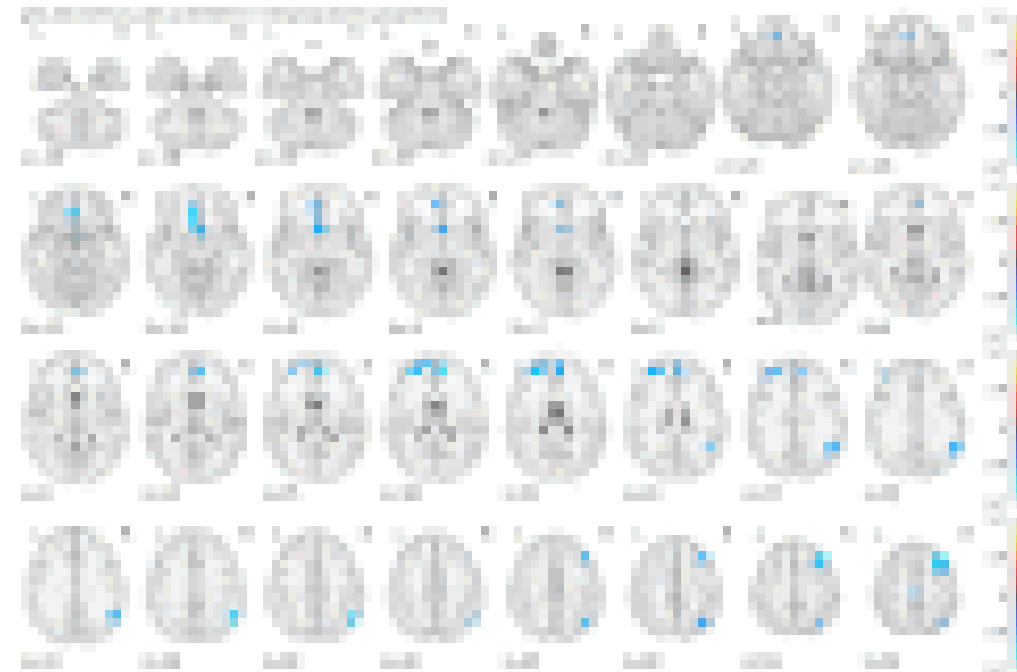
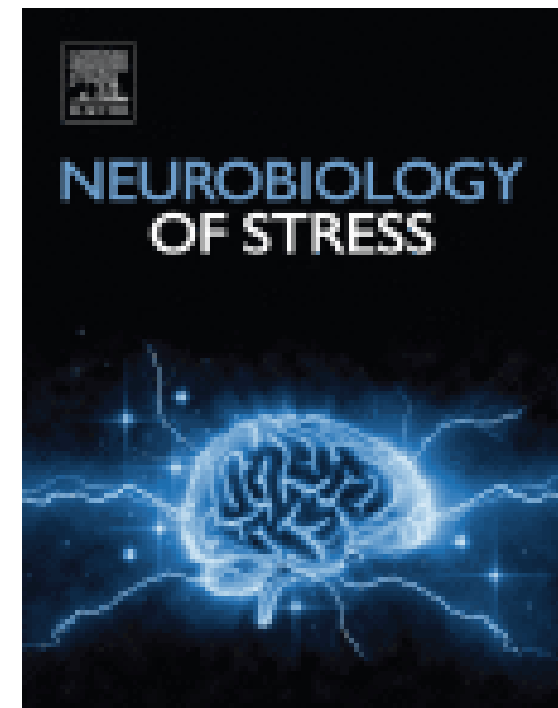


Prof. Zahava Solomon

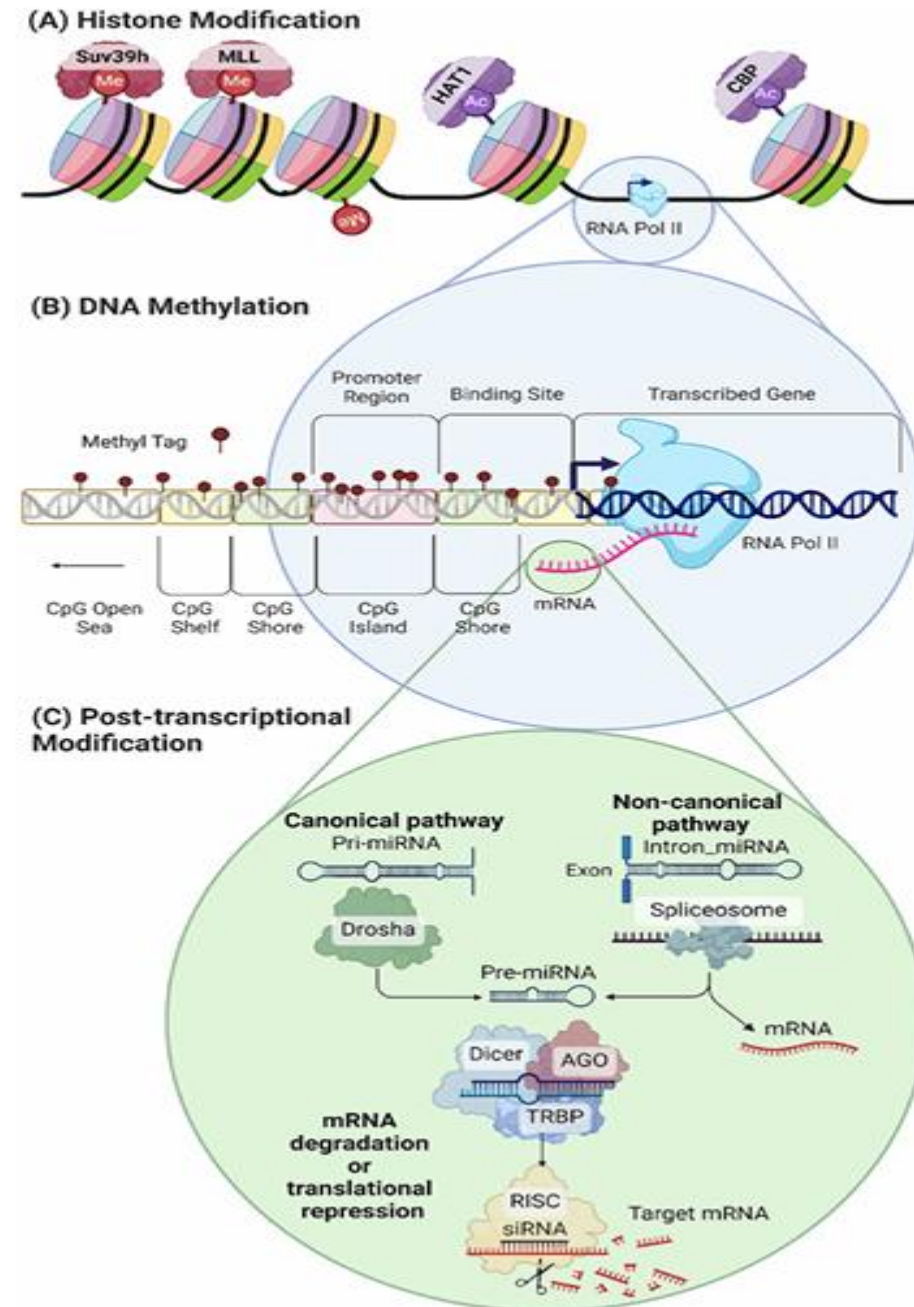
- Extreme stress in childhood and young adulthood has an irreversible lifelong impact on the brain. More than 70 years after World War II, it is possible to identify lifelong psychological and neurobiological changes in people who survived the Holocaust as compared to a control group without a similar trauma history. There are apparent persistent differences in the frequency of depression symptoms, posttraumatic stress symptoms, and posttraumatic growth, in levels of well-being, and in grey matter volume in the brain.

- Fňášková M, Říha P, Preiss M, Bob P, Nečasová M, Koriťáková E, Rektor I. Lifelong impact of extreme stress on the human brain: Holocaust survivors study. Neurobiol Stress. 2021 Mar 20;14
<https://pubmed.ncbi.nlm.nih.gov/3386968>

2



- Wellington NJ, Boucas AP, Lagopoulos J, Kuballa AV. Clinical potential of epigenetic and microRNA biomarkers in PTSD. *J Neurogenet.* 2024 Sep;38(3):79-101 <https://pubmed.ncbi.nlm.nih.gov/39470065/>





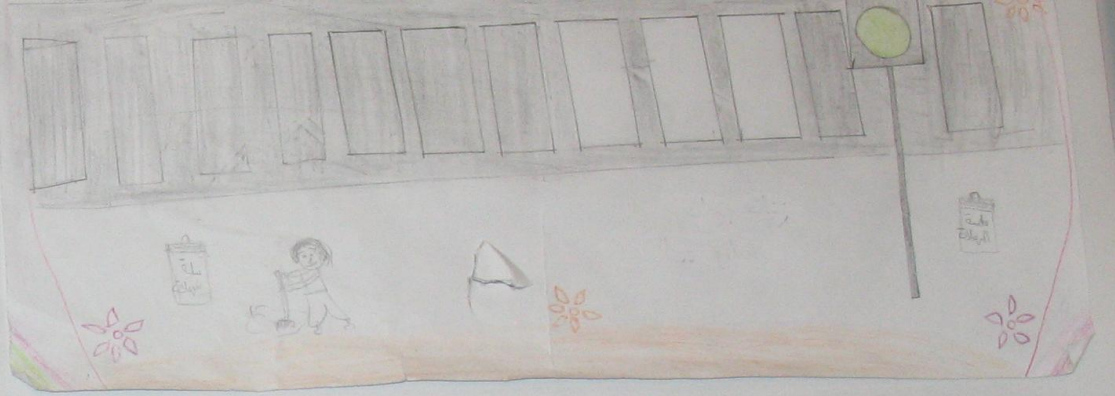
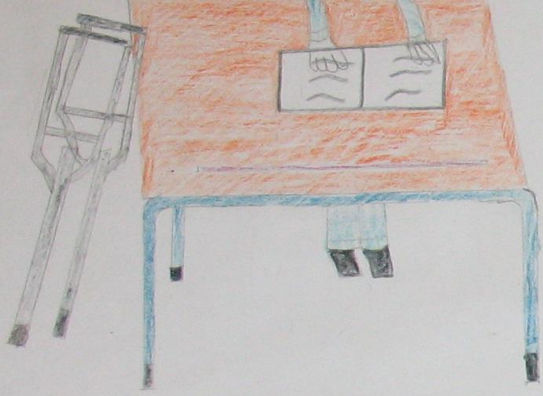
MARWAN DIAB

How to Help War-Affected Children
Effectiveness of psychosocial intervention
to improve social-emotional competencies
and resilience

Acta Universitatis Tamperensis 2431
Tampere University Press
Tampere 2018



Palestinian students study outside a tent used as makeshift classroom, in Rafah, south Gaza on January 25, 2009.





Website: www.gcmhp.org



Dr Yasser Abu Jamei says he believes in a ceasefire. Photograph: Sonja Horsman/The Observer

“GCMHP’s Director General to the Guardian: ‘We can’t give up on 1 million children’”



Gaza City



Khan Younis



Dier ElBalah



Nine Months of Israel's War on Gaza

The Mental Health Impact
and GCMHP's Response

برنامج غزة للصحة النفسية

Community Mental Health Programme



**“We know too well that
our freedom is
incomplete without the
freedom of the
Palestinians”**

Nelson Mandela

